

ASTER GDEM 30m reprojected to UTM32 (bilinear resampling) Shaded terrain around Trento, Italy

Layers

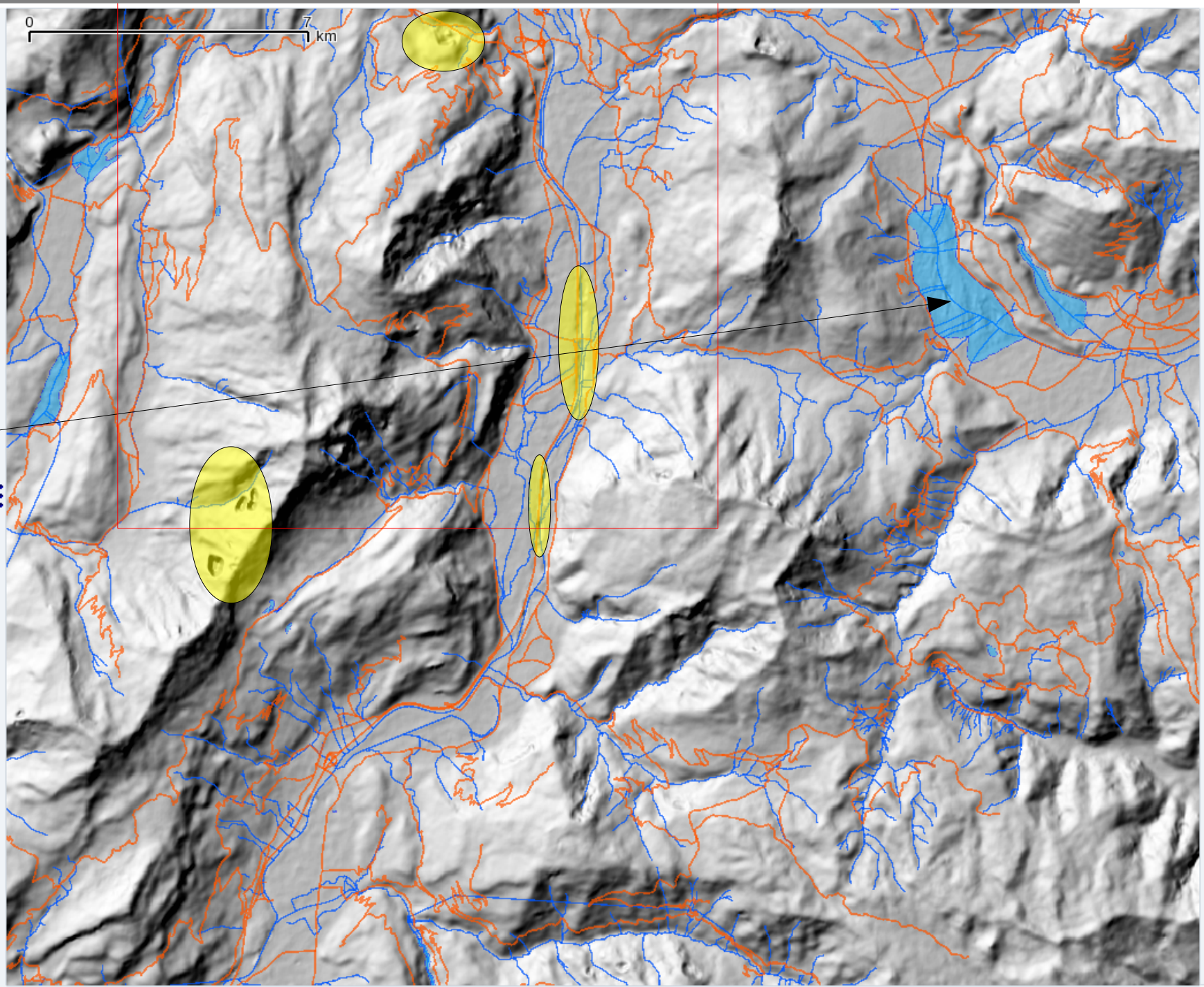
- idrlag_UTM32
- viapri
- idrfiu_UTM32
- osm_garda_lake_UT
- ASTGTM_trentino_U

Unusual craters

Lakes weren't masked

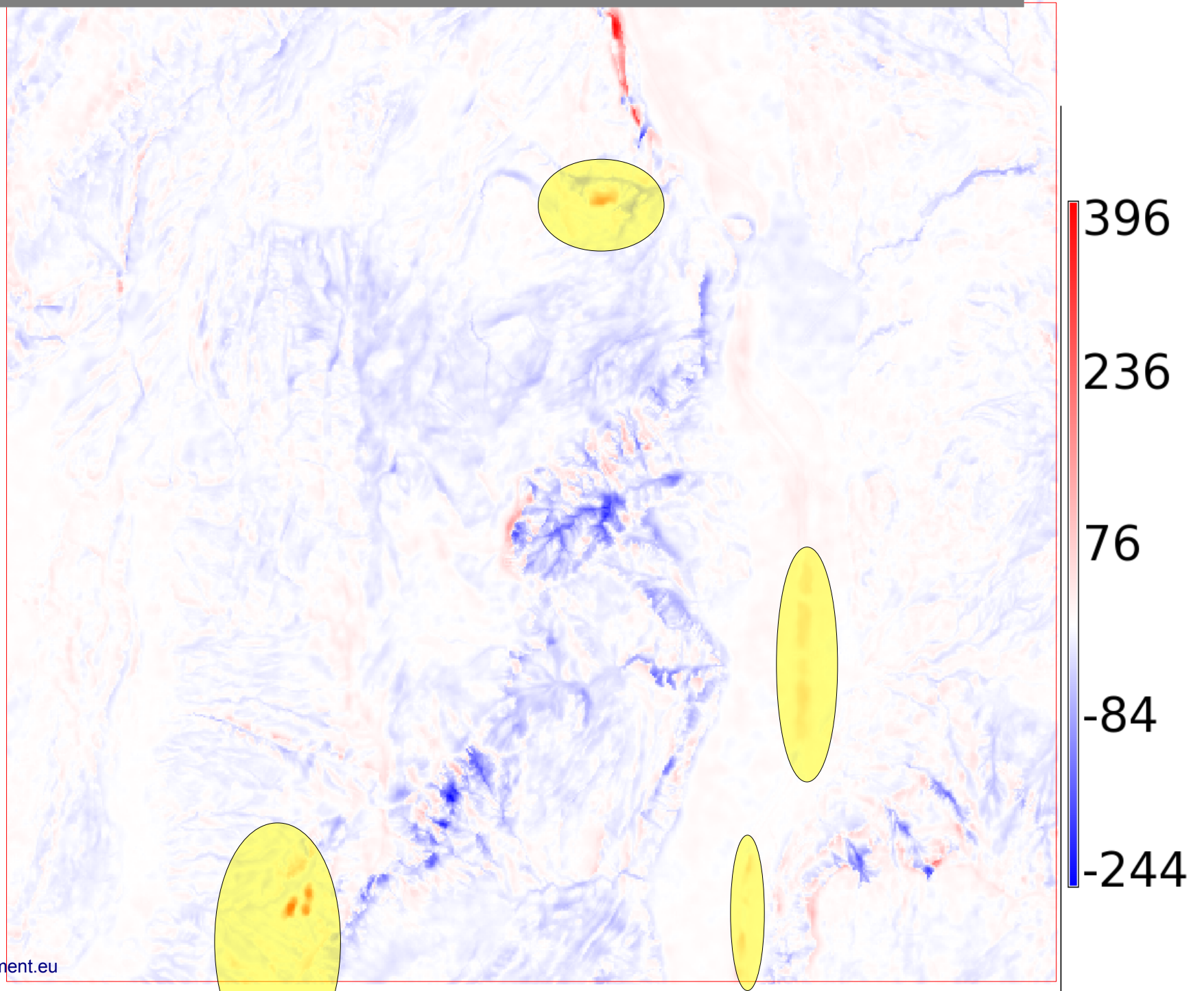
Difference map to 5m DEM (next page)

Overview

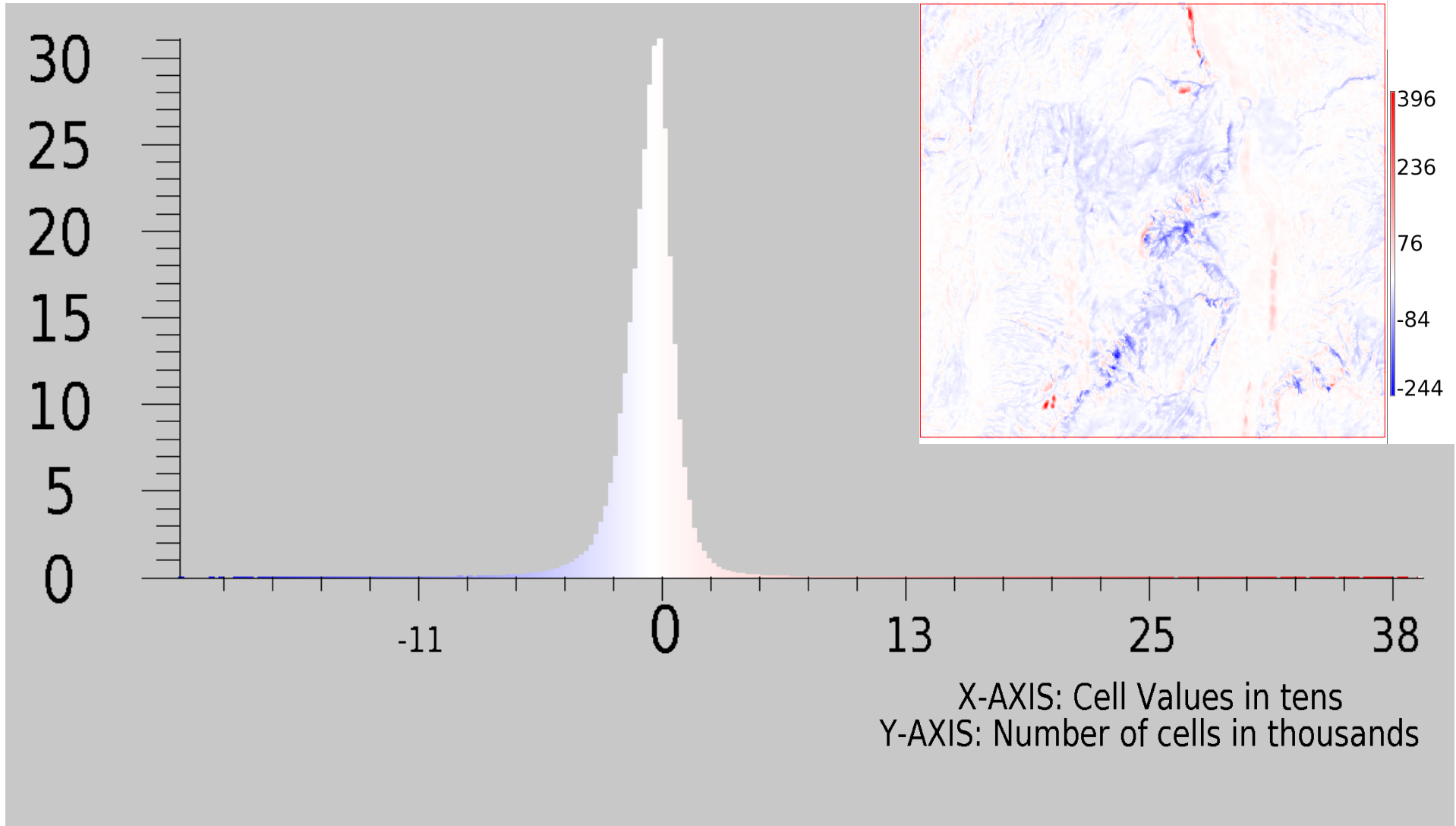


ASTER GDEM 30m reprojected to UTM32 (bilinear resampling)
Trento/Monte Bondone, Italy – differences to provincial 5m DEM

Unusual
craters



ASTER GDEM 30m reprojected to UTM32 (bilinear resampling)
Trento/Monte Bondone, Italy – differences to provincial 5m DEM



n: 315444
minimum: -243.72
maximum: 396.12
range: 639.84

mean: -2.30942
mean of absolute values: 11.0511
standard deviation: 18.3477
variance: 336.639